

# CERTIFICATE OF LOCATION OF GOVERNMENT CORNER

EAST QUARTER Corner of Section 5, Township 107N, Range 40W

5th Principal Meridian, State of Minnesota, County of Murray.

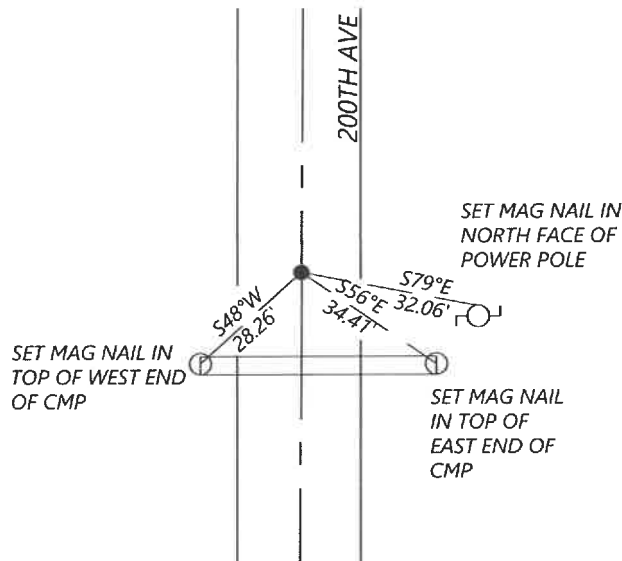
At the corner location shown on the sketch:

☐ On \_\_\_\_\_ found a \_\_\_\_\_  
DATE

☐ left monument as found ☐ lowered monument ☐ removed monument (explain)

☒ On 12/04/2021 placed a 1/2"x18" REBAR CAPPED "RLS 57085" USING SINGLE PROPORTIONATE MEASUREMENT BETWEEN  
DATE  
THE NE AND SE CORNERS OF SECTION 5 BASED ON THE 1913 WOOLSTENCROFT SURVEY.

## SKETCH OF REFERENCE TIES



N.T.S.

Statement of evidence for this corner location is on back of this page.

I hereby certify that this document was researched and prepared by me or under my direct supervision and that I am a licensed Land Surveyor under the laws of the State of Minnesota.

Signature [Signature]

Date \_\_\_\_\_ License No. 57085

Title:

☒ Land Surveyor ☐ Professional Engineer  
☐ County Surveyor ☐ County Engineer

## OFFICE OF THE COUNTY RECORDER

County of Murray

I hereby certify that this document was filed in the Co.

Recorder's office at \_\_\_\_\_ M. on the  
22nd day of April A.D. 20 22

County Recorder [Signature]  
by \_\_\_\_\_, Deputy

DOCUMENT NO. \_\_\_\_\_

SETH WECKMAN  
Minnesota License No. 57085

**Statement of Evidence:**

East Quarter corner of Section 5, Township 107 North, Range 40 West, 5th Principal Meridian, Murray County, Minnesota.

1861 Lewis Brockman, U.S. Deputy Surveyor, set a post in mound.

1913 J.W. Woolstencroft, survey shows a blue stone 10" x 12" x 24".

2021 Westwood Professional Services searched the area and did not recover a monument. Lines of occupation consist of a North/South gravel road. The field crew dug for the 1913 stone but did not recover anything. Set a 1/2" x 18" rebar with a cap marked, "RLS 57085", by using single proportionate measurement between the NE and SE corners of Section 5 based on the 1913 Woolstencroft survey. Established 3 local reference ties.

*Analysis of the recovered data, field evidence and survey measurements, indicates that the monument set is the correct perpetuation of this corner. For additional information concerning this corner please contact Westwood Professional Services.*